







**WEST EMERGENCY EXIT**  
Take stairs to Level B1 & exit via main doors to the Burke Gilman Trail.



**EAST EMERGENCY EXIT**  
Exit at East Level 1 doors. Go down the stairs and to the Burke Gilman Trail via the loading dock.



**Fire Alarm Pull Station**



**Emergency Eye Wash**



**Gas Shutoff Valve**



**Fire Extinguisher**



**First Aid Kit**



**Biological Spill Kit**



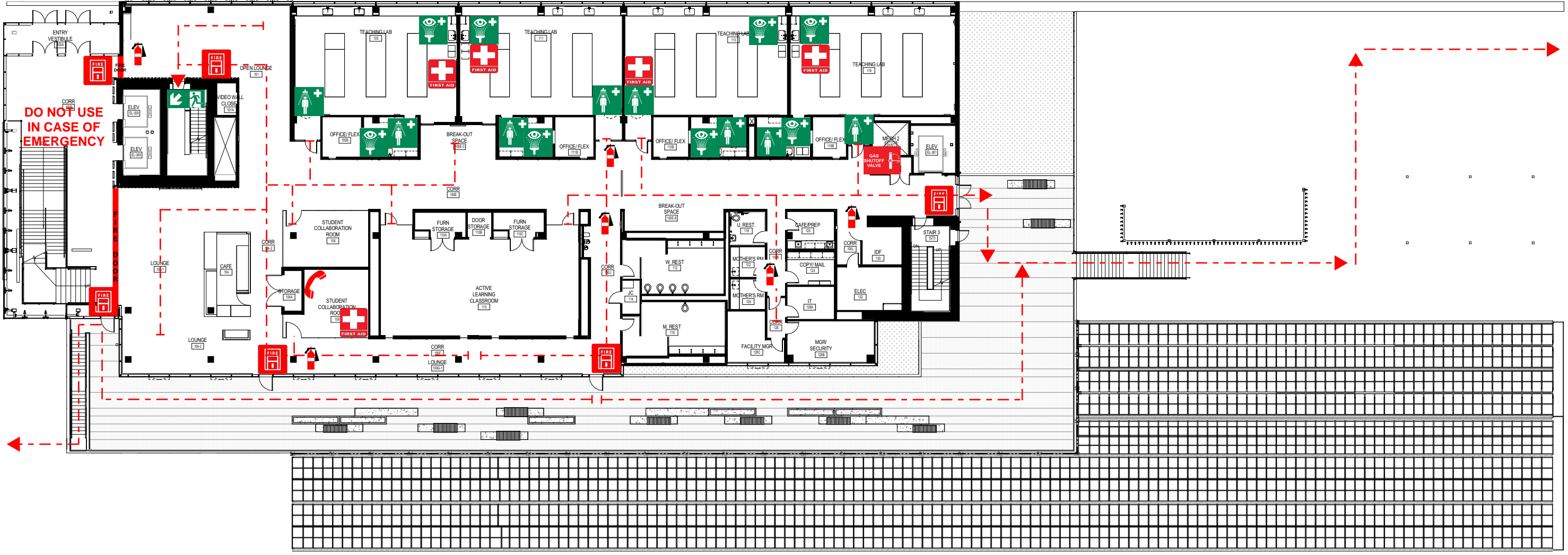
**Emergency Telephone**



**Emergency Shower**



**Chemical Spill Kit**



**DO NOT USE  
IN CASE OF  
EMERGENCY**

**WEST EMERGENCY EXIT**  
Take stairs to Level B1 & exit via main doors to the Burke Gilman Trail.

**EAST EMERGENCY EXIT**  
Take stairs to Level 1 & use emergency exit door. Go down the stairs and to the Burke Gilman Trail via the loading dock.



**Fire Alarm Pull Station**



**Emergency Eye Wash**



**Gas Shutoff Valve**



**Fire Extinguisher**



**First Aid Kit**



**Biological Spill Kit**



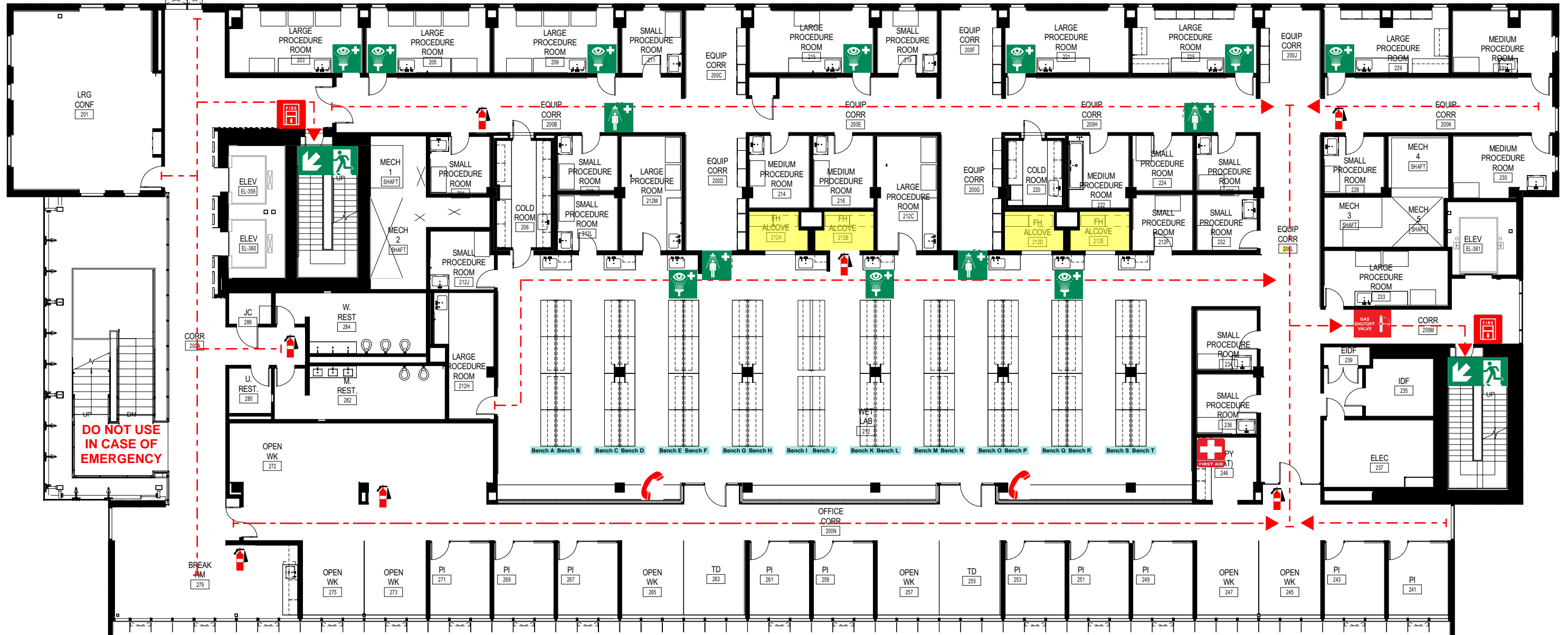
**Emergency Telephone**



**Emergency Shower**



**Chemical Spill Kit**



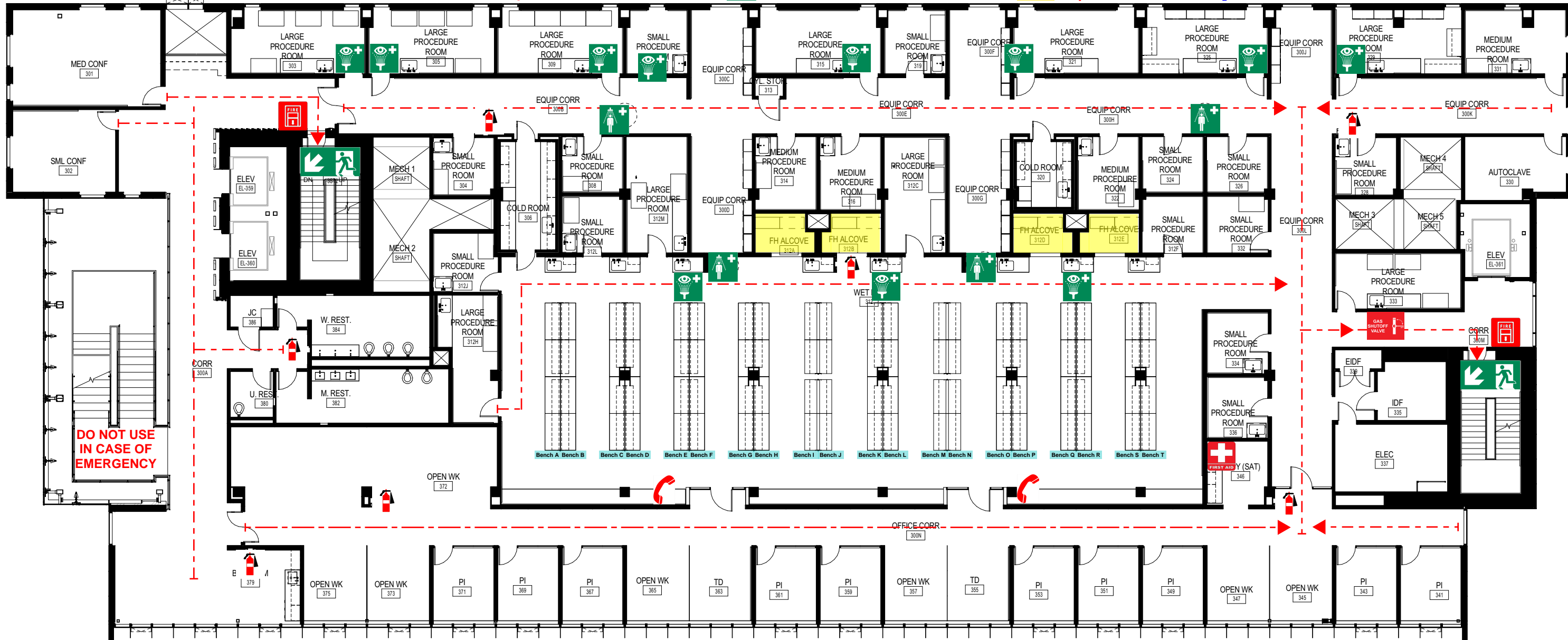
**DO NOT USE  
IN CASE OF  
EMERGENCY**

**WEST EMERGENCY EXIT**  
Take stairs to Level B1 & exit via main doors to the Burke Gilman Trail.

**EAST EMERGENCY EXIT**  
Take stairs to Level 1 & use emergency exit door. Go down the stairs and to the Burke Gilman Trail via the loading dock.



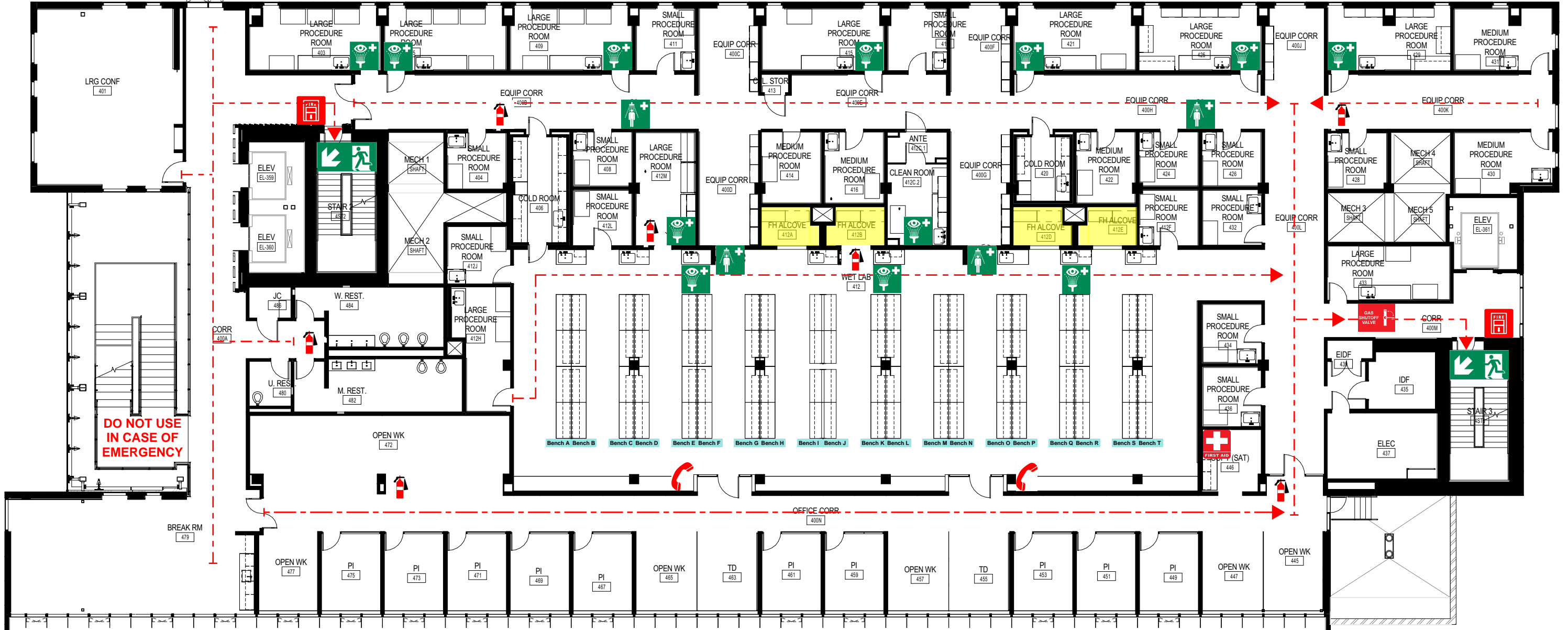
-  Fire Alarm Pull Station
-  Fire Extinguisher
-  Emergency Telephone
-  Emergency Eye Wash
-  First Aid Kit
-  Emergency Shower
-  Gas Shutoff Valve
-  Biological Spill Kit
-  Chemical Spill Kit



**DO NOT USE  
IN CASE OF  
EMERGENCY**

**WEST EMERGENCY EXIT**  
Take stairs to Level B1 & exit via main doors to the Burke Gilman Trail.

**EAST EMERGENCY EXIT**  
Take stairs to Level 1 & use emergency exit door. Go down the stairs and to the Burke Gilman Trail via the loading dock.



**DO NOT USE  
IN CASE OF  
EMERGENCY**

BREAK RM  
479

OFFICE CORR  
400N

FIRST AID  
(SAT)  
445

ELEC  
437

OPEN WK  
477

PI  
475

PI  
473

PI  
471

PI  
469

PI  
467

OPEN WK  
465

TD  
463

PI  
461

PI  
459

OPEN WK  
457

TD  
455

PI  
453

PI  
451

PI  
449

OPEN WK  
447

OPEN WK  
445

CORR  
400A

JC  
488

W. REST.  
484

U. RES  
480

M. REST.  
482

LARGE PROCEDURE ROOM  
412H

SMALL PROCEDURE ROOM  
412J

SMALL PROCEDURE ROOM  
412L

SMALL PROCEDURE ROOM  
412M

SMALL PROCEDURE ROOM  
412N

SMALL PROCEDURE ROOM  
412P

SMALL PROCEDURE ROOM  
412R

SMALL PROCEDURE ROOM  
412S

SMALL PROCEDURE ROOM  
412T

SMALL PROCEDURE ROOM  
428

SMALL PROCEDURE ROOM  
430

ELEV  
EL-381

ELEV  
EL-389

ELEV  
EL-390

MECH 1  
SHAFT

MECH 2  
SHAFT

SMALL PROCEDURE ROOM  
404

SMALL PROCEDURE ROOM  
406

SMALL PROCEDURE ROOM  
408

SMALL PROCEDURE ROOM  
410

SMALL PROCEDURE ROOM  
412

SMALL PROCEDURE ROOM  
414

SMALL PROCEDURE ROOM  
416

SMALL PROCEDURE ROOM  
418

SMALL PROCEDURE ROOM  
420

SMALL PROCEDURE ROOM  
422

SMALL PROCEDURE ROOM  
424

SMALL PROCEDURE ROOM  
426

LARGE PROCEDURE ROOM  
403

LARGE PROCEDURE ROOM  
405

LARGE PROCEDURE ROOM  
407

LARGE PROCEDURE ROOM  
409

SMALL PROCEDURE ROOM  
411

SMALL PROCEDURE ROOM  
413

SMALL PROCEDURE ROOM  
415

SMALL PROCEDURE ROOM  
417

SMALL PROCEDURE ROOM  
419

SMALL PROCEDURE ROOM  
421

SMALL PROCEDURE ROOM  
423

SMALL PROCEDURE ROOM  
425

SMALL PROCEDURE ROOM  
427

SMALL PROCEDURE ROOM  
429

SMALL PROCEDURE ROOM  
431

MEDIUM PROCEDURE ROOM  
433

LRG CONF  
401

EQUIP CORR  
400B

EQUIP CORR  
400C

EQUIP CORR  
400D

EQUIP CORR  
400E

EQUIP CORR  
400F

EQUIP CORR  
400G

EQUIP CORR  
400H

EQUIP CORR  
400I

EQUIP CORR  
400J

EQUIP CORR  
400K

EQUIP CORR  
400L

EQUIP CORR  
400M

EQUIP CORR  
400N

EQUIP CORR  
400O

EQUIP CORR  
400P

LRG CONF  
401

LRG CONF  
401

LRG CONF  
401

LRG CONF  
401

LRG CONF  
401

LRG CONF  
401

LRG CONF  
401

LRG CONF  
401

LRG CONF  
401

LRG CONF  
401

LRG CONF  
401

LRG CONF  
401

LRG CONF  
401

LRG CONF  
401

LRG CONF  
401

LRG CONF  
401



Fire Alarm Pull Station



Emergency Eye Wash



Gas Shutoff Valve



**WEST EMERGENCY EXIT**  
Take stairs to Level B1 & exit via main doors to the Burke Gilman Trail.



Fire Extinguisher



First Aid Kit



Biological Spill Kit



North



**EAST EMERGENCY EXIT**  
Take stairs to Level 1 & use emergency exit door. Go down the stairs and to the Burke Gilman Trail via the loading dock.



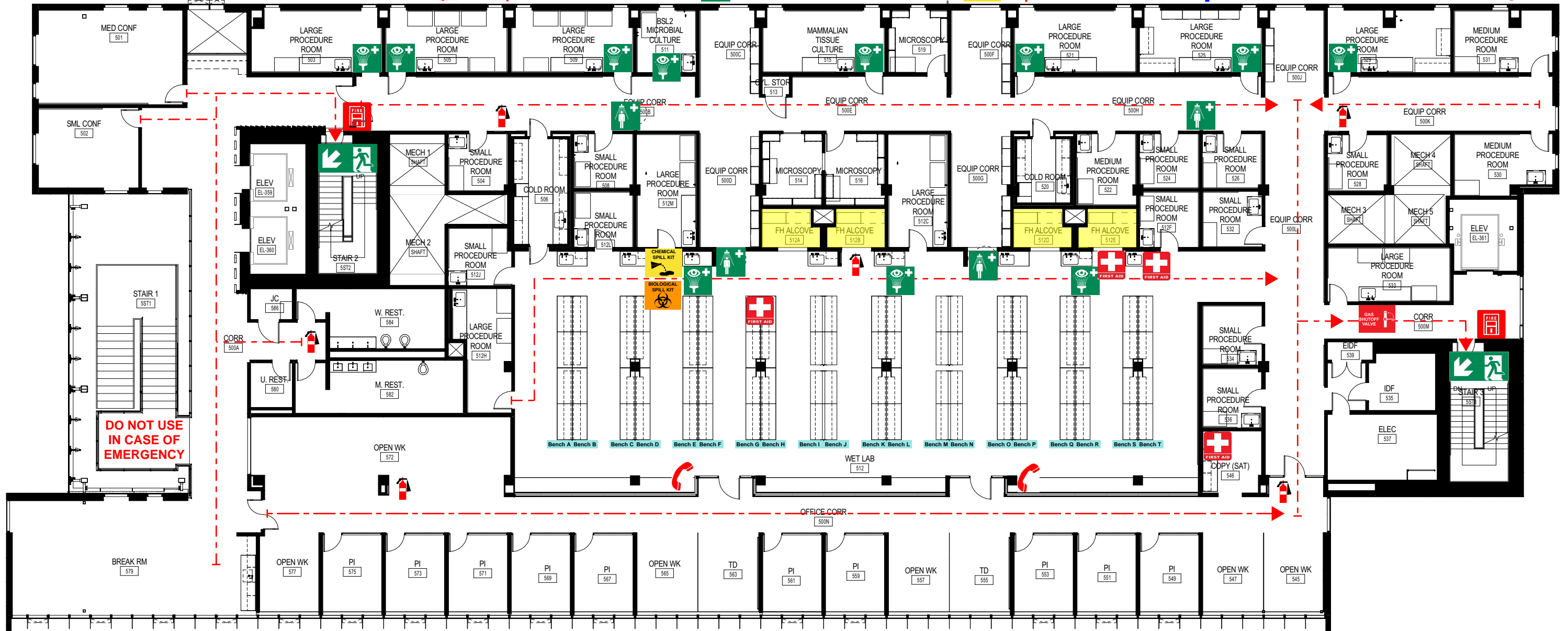
Emergency Telephone



Emergency Shower



Chemical Spill Kit



**DO NOT USE  
IN CASE OF  
EMERGENCY**

