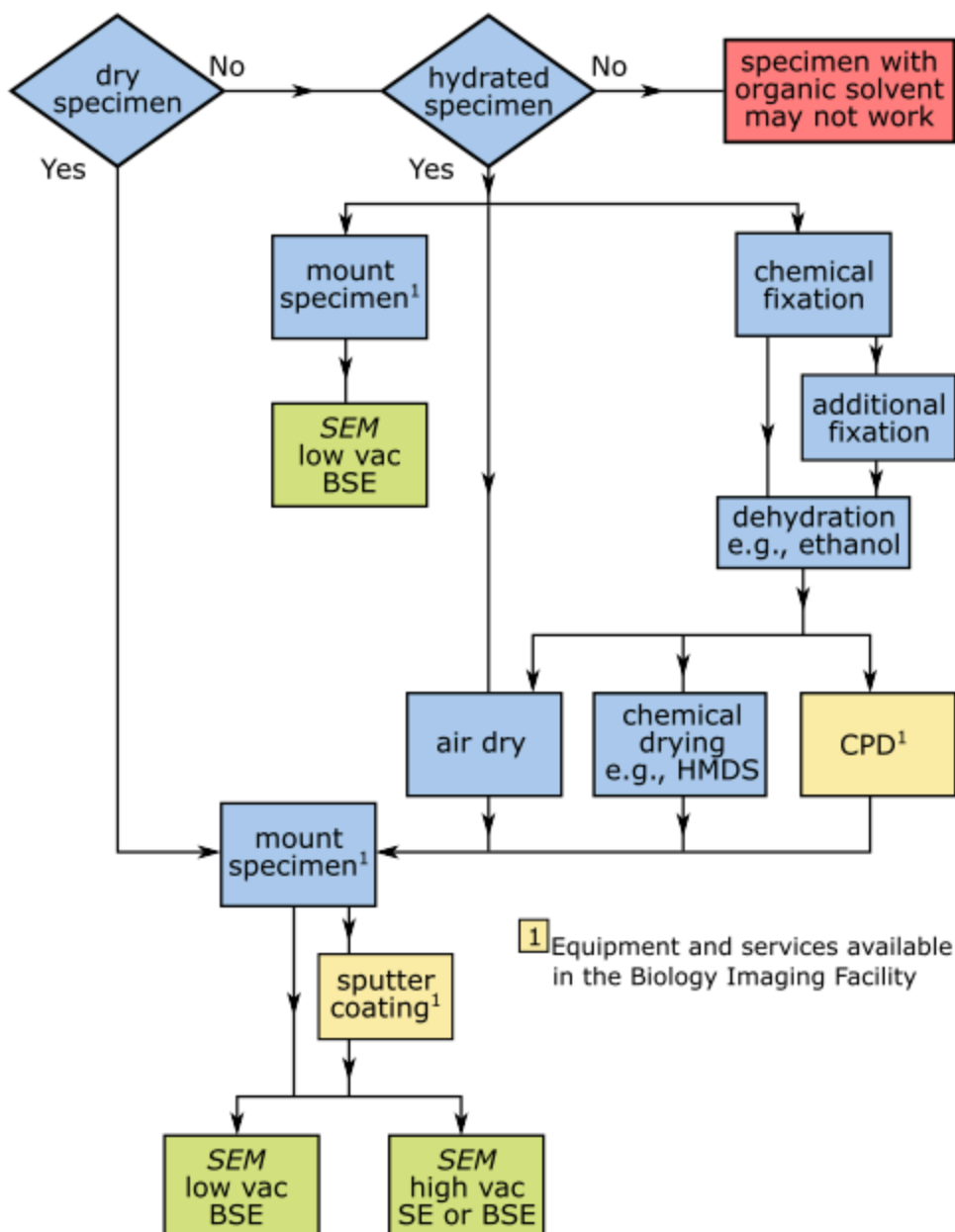


STF-funded hardware and software for image acquisition and analyses in Biology

- STF 2024: Leica light microscopes and camera in LSB4 wet lab area, please contact Brosi Lab Manager <mchandar@uw.edu> for training
 - DM1000 LED Compound Microscope
 - M80 Stereomicroscope
 - Flexacam C5 camera with Enersight camera software
- STF 2021-3: JEOL JCM-7000 benchtop scanning electron microscope in LSB B202, please contact Prof. Alex Paredez <aparedez@uw.edu> for training
 - SEM sample preparation flow chart indicating steps that can be done in the Imaging Facility [sample prep labs](#)



- SEM sample mounts available in the sample prep labs

type	size (diameter × height, mm)	double-stick carbon tab (diameter, mm) ¹	storage box
pin	12.7 × 8	12	small box, holds 4
cylinder	25 × 8 ²	25	box with partitions, holds 6
cylinder	32 × 10	32	box with partitions, holds 6

¹Other types of adhesive are also available, e.g., cut to size double-stick sheets and tape, carbon paint, silver paste, and silver epoxy.

²This stub is compatible with the Tilt Rotation Motor Drive Holder (TRMH2) of the JEOL JCM-7000 benchtop SEM.

- STF 2020-35: Imaris 9.5 for Cell Biologists, floating licenses
- STF 2020-34: 24" and 32" Wacom display graphics tablets
- STF 2017-101: high performance computers with dual Xeon processors, 128 or 256 GB of RAM, and NVIDIA Quadro P2000 and GeForce GTX 1080 GPU.

Other equipment

- Biology has an Ocean Optics USB2000 spectrometer with accessories, please check with facility staff about availability
 - OceanView 1.6.7, Acer laptop
 - reflection probe holder
 - reflectance probe R400-7-UV-VIS
 - Spectralon diffuse reflection standard
 - DGK color chart
 - DH-2000 light source