

# COVID-19 UPDATE

---

**Katia Harb**

**Director**

**Environmental Health & Safety**

**March 2021**

**ENVIRONMENTAL HEALTH & SAFETY**

UNIVERSITY of WASHINGTON

UNIVERSITY of WASHINGTON

## STAY HEALTHY, HUSKIES

You can reduce the risk of spreading the coronavirus that causes COVID-19 by taking the same steps you'd take to avoid getting colds and the flu:



**Wash hands** often with soap and water for at least **20 seconds**. If water's not available, use **hand sanitizer** with 60-95% alcohol.



**Avoid touching your eyes, nose or mouth** with unwashed hands.



**Cover your mouth and nose** with your elbow or a tissue when you cough or sneeze – and immediately dispose of used tissues.



**If you're sick**, stay home and avoid close contact with others.



If you need to miss class, contact your instructor directly.

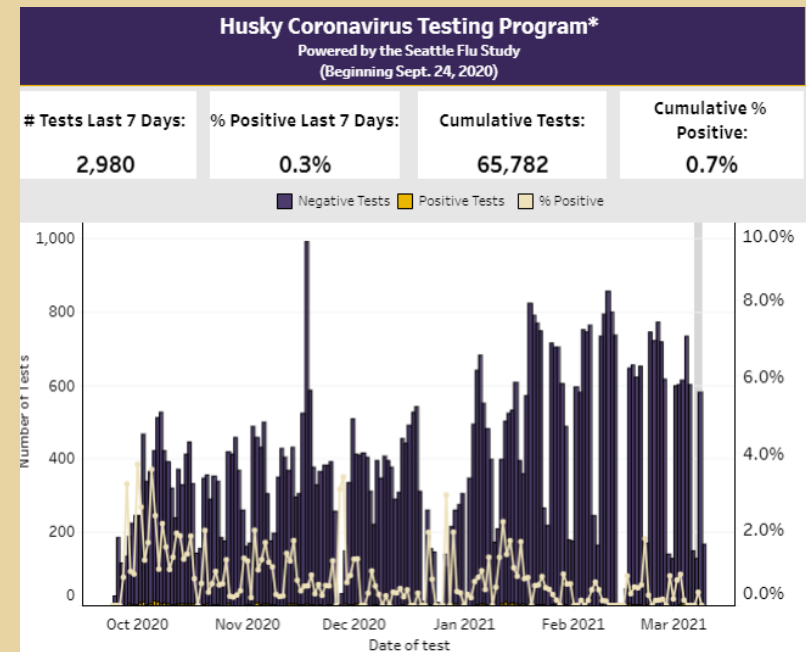
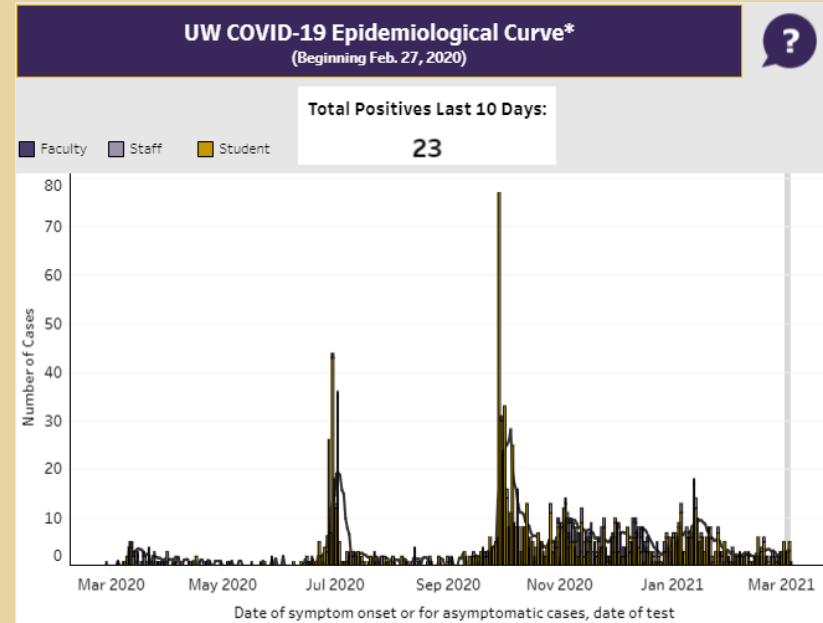
Many people who contract this coronavirus have relatively mild symptoms and fully recover. If you're concerned about your symptoms, **call your health-care provider first** before seeking medical care in person.

For more info: [uw.edu/coronavirus](https://uw.edu/coronavirus)



# COVID-19 CASES AND VACCINES UPDATE

- UW cases remain lower than autumn quarter
- Increase in fraternity/sorority cases since mid-February
- 17% of people in WA initiating vaccine
- 10% of people in WA fully vaccinated

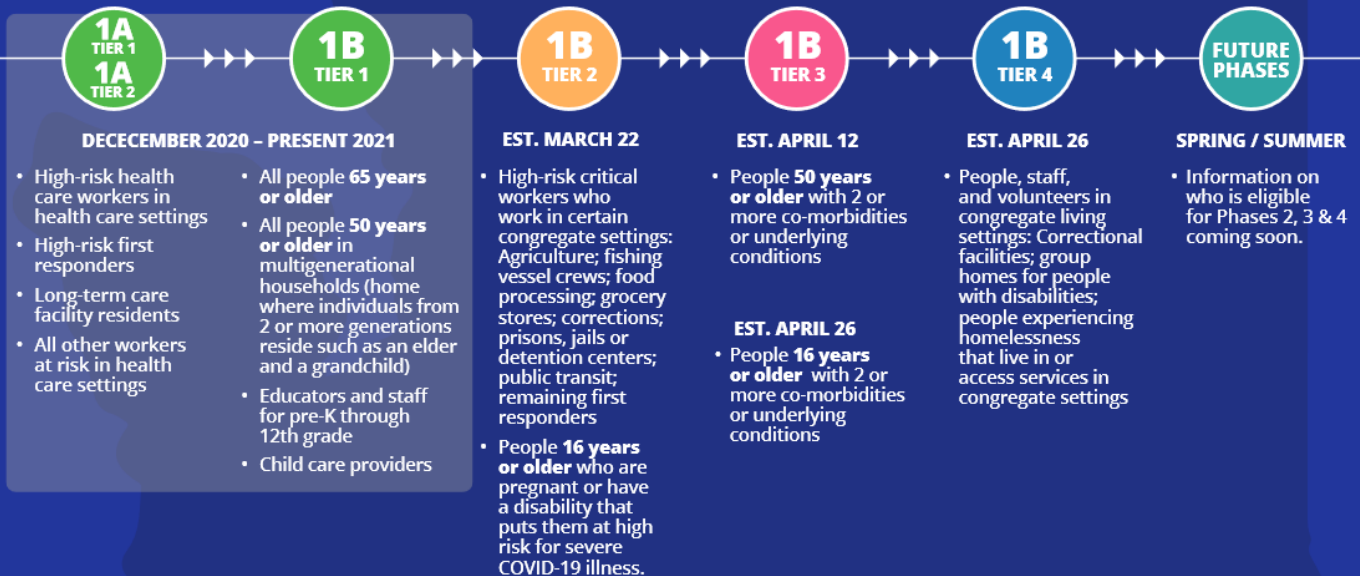


# WA CURRENTLY VACCINATING PHASE 1B

## WASHINGTON'S COVID-19 VACCINE PHASES

Phase 1 Estimated Start Dates (Tiers A and B)

Find out if it's your turn at [FindYourPhaseWA.org](https://www.findyourphasewa.org)



**FOCUS ON EQUITY:** This approach prioritizes population groups who have been disproportionately impacted by COVID-19 due to external social factors and systemic inequities, including people of color; people with limited English proficiency; people in shared housing, crowded housing, and multigenerational homes; people in poverty and low-wage earners; people with disabilities that are connected to underlying health conditions that may put them at higher risk of COVID-19; and people with access barriers to healthcare. The [social vulnerability index](#) is one of several inputs informing equitable vaccine allocation.

**NOTE:** Immigration and health insurance status do not impact eligibility.

The timeline represented here is tentative and subject to change based on vaccine supply and demand.



[CovidVaccineWA.org](https://www.CovidVaccineWA.org)

DOH 348-785 January 2021  
Last updated 3/4/21

- PreK-12 school staff now eligible.
- High risk critical workers eligible March 22
- UW Medicine offering vaccine to UW employees and students in addition to patients.
- Three vaccines now have Emergency Use Authorization in US (Pfizer, Moderna, Johnson & Johnson)

# *VACCINE PLANNING AND DISTRIBUTION*

---

- UW Medicine is providing vaccines to eligible patients, employees, and students in Phase B1, A1, A2.
- UW Medicine planning to expand vaccine site to E1.
- Supply of vaccine is a limitation but improving.
- ACCD vaccine policy recommendation for fall quarter being reviewed by UW leadership.
- Public Health guidance for fully vaccinated people is starting to evolve.
  - Quarantine guidance for vaccinated people updated.  
<https://www.washington.edu/coronavirus/vaccines/>

# UPDATE- QUARANTINE GUIDANCE FOR THOSE FULLY VACCINATED

---

- After getting vaccinated, you do **not** need to quarantine after having close contact with a COVID-19 positive person **if you meet both criteria:**
  - Your close contact exposure was within 3 months of becoming *fully vaccinated*. (You are considered fully vaccinated 2 weeks after the 2nd dose of a two-dose vaccine, or 2 weeks after a single-dose vaccine), **AND**
  - You have **not** developed any symptoms since your exposure.
- If you **do not meet one or both of the above criteria**, follow the quarantine guidance provided by a contact tracer (or other public health official) to protect your health and the health of the UW community.

***Above may not apply to healthcare workers- follow medical center procedures***

- Being vaccinated does not change other current public health or workplace requirements for COVID-19 prevention such as distancing, masking, or isolation if you test positive. ***As public health guidance and regulations change, UW requirements will adjust.***

# WA ROADMAP TO RECOVERY

All regions in WA state in Phase 2, DOH is planning for Phase 3

Phases by Region in effect until further notice



Phase 1 Phase 2



Regions	Trend in case rate	Trend in hospital admission rate	Percent ICU occupancy	Percent positivity
East	-43%	-17%	73%	10%
North	-32%	-17%	53%	6%
North Central	-40%	-60%	87%	10%
Northwest	-43%	-17%	73%	5%
Puget Sound	-41%	-14%	85%	6%
South Central	-41%	-19%	86%	14%
Southwest	-30%	-24%	71%	14%
West	-28%	-31%	82%	7%
Statewide	-40%	-20%	81%	7%

Legend	<span style="background-color: #ADD8E6; border: 1px solid black; display: inline-block; width: 15px; height: 10px;"></span> Decrease (-10% or more)	<span style="background-color: #ADD8E6; border: 1px solid black; display: inline-block; width: 15px; height: 10px;"></span> Decrease (-10% or more)	<span style="background-color: #ADD8E6; border: 1px solid black; display: inline-block; width: 15px; height: 10px;"></span> Low (less than 90%)	<span style="background-color: #ADD8E6; border: 1px solid black; display: inline-block; width: 15px; height: 10px;"></span> Low (less than 10%)
	<span style="background-color: #000080; border: 1px solid black; display: inline-block; width: 15px; height: 10px;"></span> Flat (0% to less than -10%)	<span style="background-color: #000080; border: 1px solid black; display: inline-block; width: 15px; height: 10px;"></span> Flat (0% to less than -10%)	<span style="background-color: #000080; border: 1px solid black; display: inline-block; width: 15px; height: 10px;"></span> High (90% or more)	<span style="background-color: #000080; border: 1px solid black; display: inline-block; width: 15px; height: 10px;"></span> High (10% or more)
	<span style="background-color: #000000; border: 1px solid black; display: inline-block; width: 15px; height: 10px;"></span> Increase (more than 0%)	<span style="background-color: #000000; border: 1px solid black; display: inline-block; width: 15px; height: 10px;"></span> Increase (more than 0%)		

– <https://coronavirus.wa.gov/what-you-need-know/roadmap-recovery-metrics>

# COUNTERFEIT N95 UPDATE

## NEW MODEL ADDED TO LIST

- **8210, 1860, 1860S, 1870+**
  1. Collect and remove from service
  2. Place them in a box or container that is labeled "DO NOT USE."
  3. Notify EH&S Respirator Program Administrator, [uwresp@uw.edu](mailto:uwresp@uw.edu)
  4. EH&S will provide you with additional guidance.

<https://www.ehs.washington.edu/about/latest-news/counterfeit-3m-n95-respirators-new-model-added>



ENVIRONMENTAL HEALTH & SAFETY

UNIVERSITY of WASHINGTON

# *QUESTIONS AND REFERENCES*

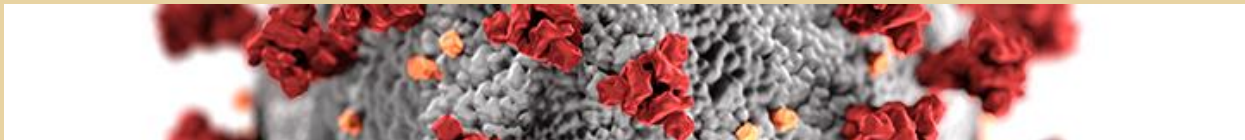
---

**EH&S COVID-19 Response and Prevention Team, [covidehc@uw.edu](mailto:covidehc@uw.edu)**

References:

<https://www.ehs.washington.edu/covid-19-health-and-safety-resources>

<https://www.governor.wa.gov/sites/default/files/HealthyWashington.pdf>



**ENVIRONMENTAL HEALTH & SAFETY**

UNIVERSITY *of* WASHINGTON